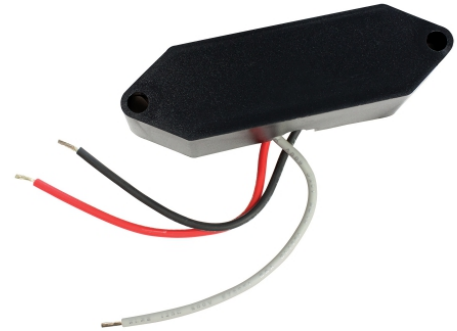


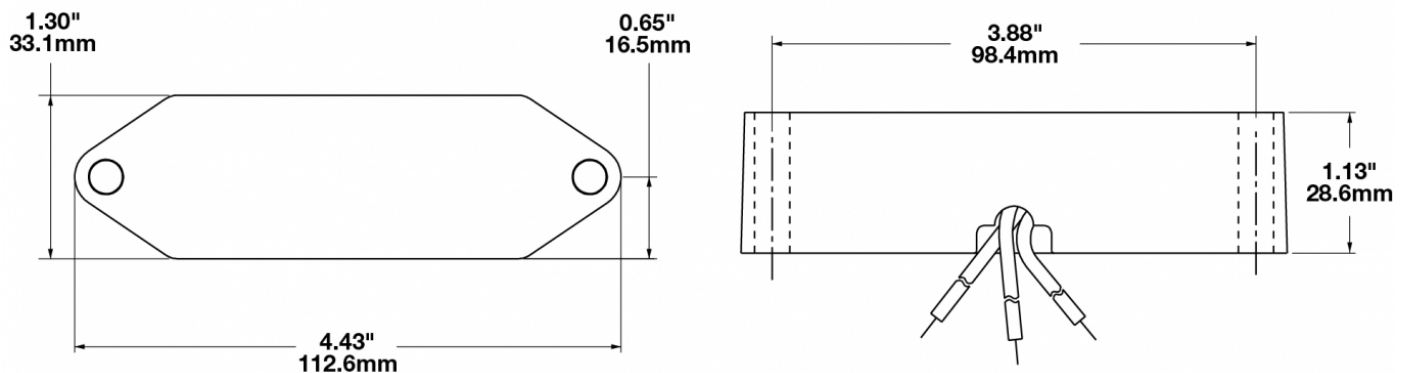
Flasher Control Module - Model 6309

PRODUCT INFORMATION

Description	12-80V Flasher Control Module
Height	28.70 mm / 1.13 in
Width	111.00 mm / 4.37 in
Depth	33.27 mm / 1.31 in
Housing Material	Polycarbonate
Mounting Type	Low Profile Mount
Minimum Operating Temperature	-40 °C / -40 °F
Maximum Operating Temperature	65 °C / 149 °F
Connector or Wiring	9" Bare Leads
Product Weight	0.16 lbs / 0.07 kgs
Shipping Weight	2.39 lbs / 1.08 kgs



PRODUCT DIMENSIONS



Print date: 2024-06-30

© 2024 J.W. Speaker Corporation • Germantown, WI U.S.A.
 www.jwspeaker.com • speaker@jwspeaker.com • 262.251.6660

J.W. SPEAKER
 Engineered. Lighting. Solutions.

Flasher Control Module - Model 6309

ELECTRICAL SPECIFICATIONS

Input Voltage	12-80V DC
Current Draw	5A @ 12V DC
	5A @ 24V DC
	5A @ 36V DC
	5A @ 48V DC
	5.00A @ 60V DC
	5.00A @ 80V DC

REGULATORY STANDARDS COMPLIANCE

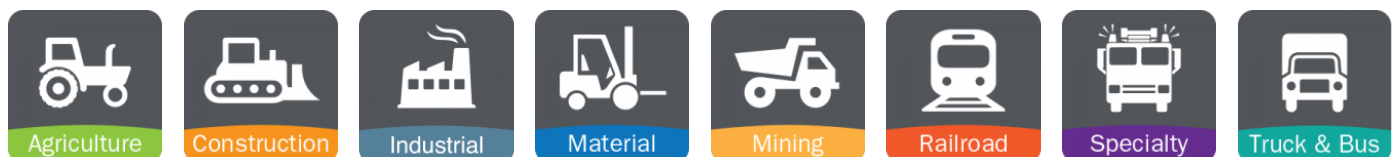


Buy America Standards MIL-STD 461	IEC IP67 UL Recognized
--------------------------------------	---------------------------

PHOTOMETRIC SPECIFICATIONS

Flash Rate 1	70 +/- 10 fpm
---------------------	---------------

APPLICATIONS



PRODUCT WARNINGS

For California residents:

⚠ **WARNING:** Cancer and reproductive harm - www.P65Warnings.ca.gov.

⚠ **AVERTISSEMENT:** Cancer et effet nocif sur la reproduction - www.P65Warnings.ca.gov.

Print date: 2024-06-30

© 2024 J.W. Speaker Corporation • Germantown, WI U.S.A.
www.jwspeaker.com • speaker@jwspeaker.com • 262.251.6660

J.W. SPEAKER
Engineered. Lighting. Solutions.